

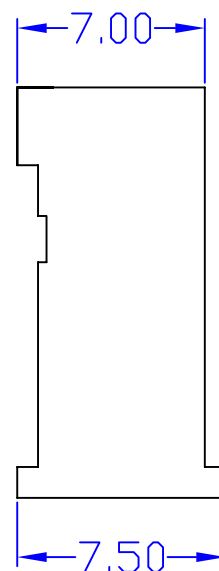
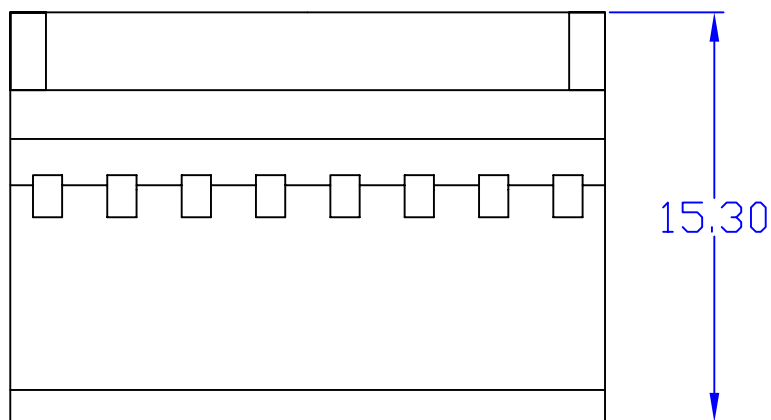
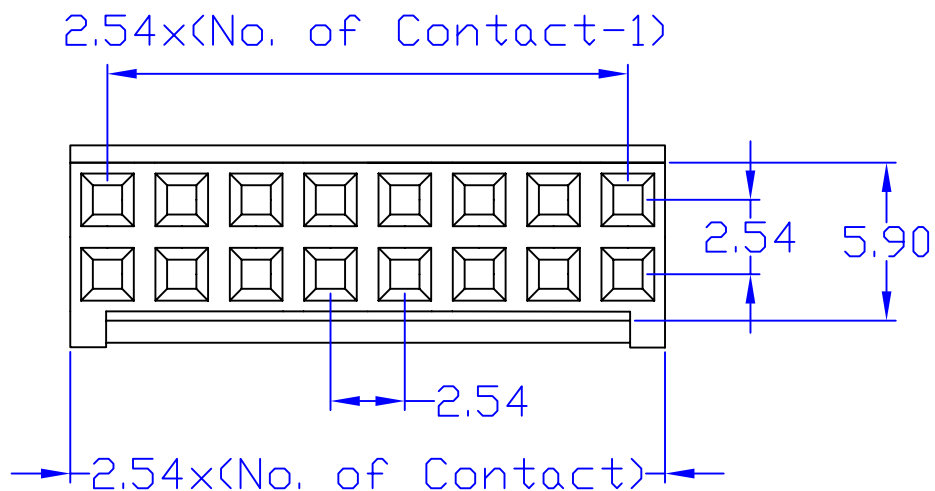
2548-2x** Series

- * Available in 2x3~2x20 Circuits
- * Material: PBT UL94V-0, Color Black
- * Accepts Conwin 2540T Terminal
- * Mates with 2542S / 2542R Headers

Specifications

- * Current Rating: 3A AC, DC
- * Voltage Rating: 250V AC, DC
- * Temperature Range: -25°C~+85°C
- * Insulation Resistance: 1,000MΩ min.
- * Withstand Voltage: 1000V AC/minute

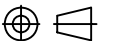
RoHS



CONWIN ENTERPRISES CO., LTD.

禧司康有限公司

No. 25, Lane 372, Jinmen St., Ban Chiao 22071, Taipei, Taiwan
 TEL: 886-2-2675-3311 FAX: 886-2-2675-0501

TITLE	2.54mm Pitch Double Row Housing	APP.BY	H.H.T.-06/11/08'	TOLERANCE UNLESS OTHERWISE SPECIFIED		SIZE:	A4
PART No:	2548-2x** Series	CHK.BY	Natalia-06/11/08'	LINEAR	0.0 ±0.38	SHEET:	1/1
DRW No:	C2548H2001	DRW.BY	Natalia-06/11/08'		0.00 ±0.25	COMMENTS:	成品規格圖
PROJECT:	 UNIT: mm	SCALE	NOT TO SCALE	ANGLES	±3°		