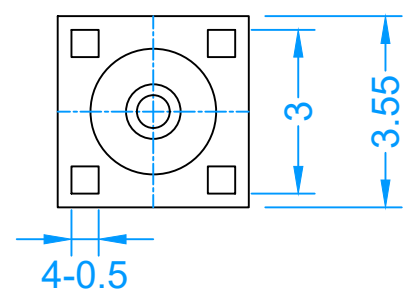
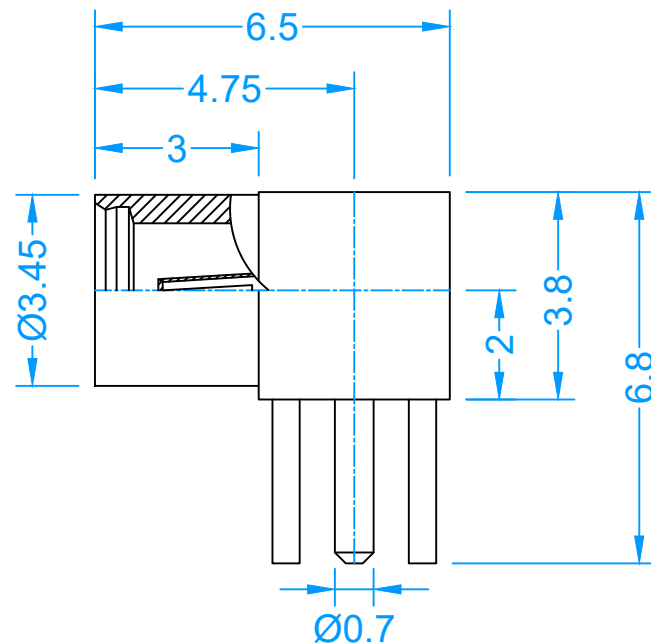


Meets MIL-C-39012, IEC169-12, CECC 22110  
Precision Machined and High Quality Material

**TECHNICAL CHARACTERISTICS**

Impedance	50Ω
Frequency Range	DC-3GHz
Working Voltage	170V r.m.s @ sea level
Withstanding Voltage	500V r.m.s @ sea level
Contact Resistance	
Center Contact	≤5mΩ
Outer Contact	≤2.5mΩ
Insulation Resistance	≥1000MΩ
Insertion Loss	0.18dB @ 1GHz
Engagement Force	≤15N
Disengagement Force	≥6N
V.S.W.R.	Not Applicable
Durability	≥500 cycles



3	Pin Contact	1	Be. Bronze	Gold
2	Insulator	1	PTFE	Natural
1	Body	1	Brass	Gold
No.	Description	QTY	Material	Finish

**RoHS  
Compliant**

© THIRD ANGLE PROJECTION

\* MAJOR DIMENSION  
UNLESS OTHERWISE  
NOTED TOLERANCES

SCALE 1:1 UNIT MM

APPROVED  
**JOHN**

CHECKED  
**TERRY**

DRAWN  
**Kevin**

DRAWN DATE  
July 01, 2012

**KM** KeMy Electronic Technology Inc.

TITLE  
**MMCX Female Jack, Right Angle, for  
PCB**

DRAWING NO. **KM-011106**

REV  
0