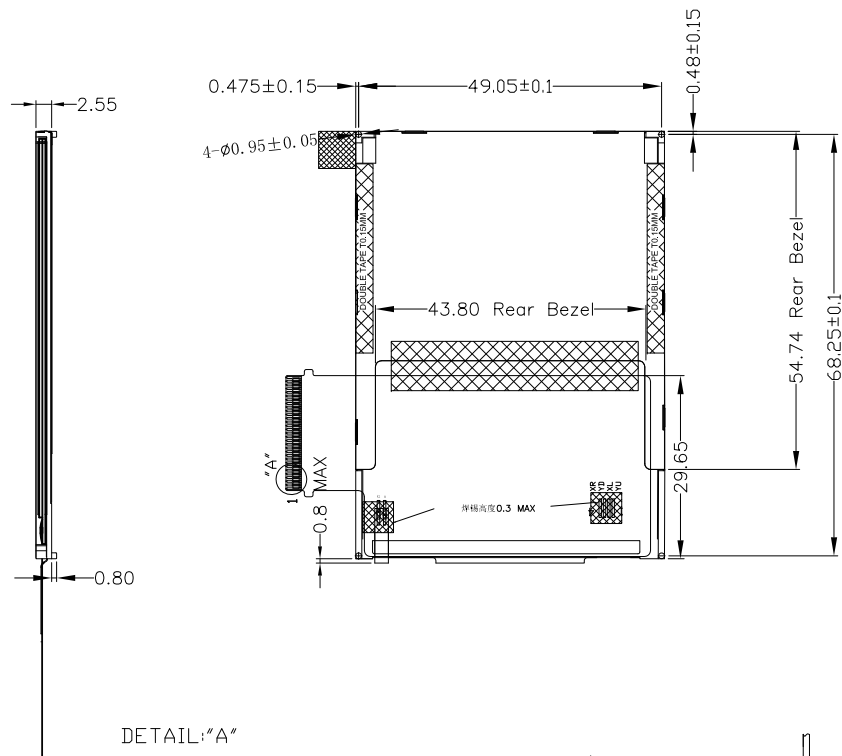
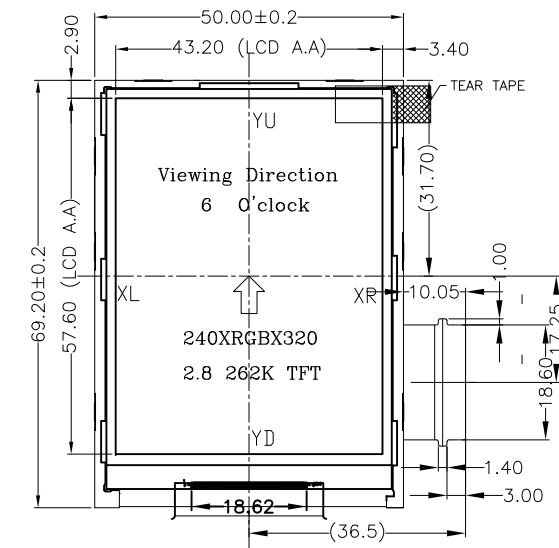


UNIT: mm



INTERNAL CONNECTING PIN

PIN	SYMBOL	PIN	SYMBOL	PIN	SYMBOL
1	GND	21	D10	41	YU
2	VCI/2.8V	22	D9	42	XL
3	VCC/1.8V	23	D8	43	YD
4	NC	24	D7	44	XR
5	SDA	25	D6	45	NC
6	NC	26	D5	~61	
7	NC	27	D4		
8	NC	28	D3		
9	NC	29	D2		
10	VSYN	30	D1		
11	HSYN	31	D0		
12	DOTCLK	32	NC		
13	DE	33	SCL		
14	D17	34	NC		
15	D16	35	CS		
16	D15	36	FLM		
17	D14	37	RESET		
18	D13	38	GND		
19	D12	39	LED A		
20	D11	40	LED K		

DIMENSION	GENERAL LINEAR TOLERANCE			SELECT LEVEL
	1	2	3	
0 ~ 4	0.05	0.15	0.2	1
4 ~ 14	0.1	0.15	0.2	
14 ~ 63	0.1	0.2	0.4	2
63 ~ 250	0.2	0.4	0.6	

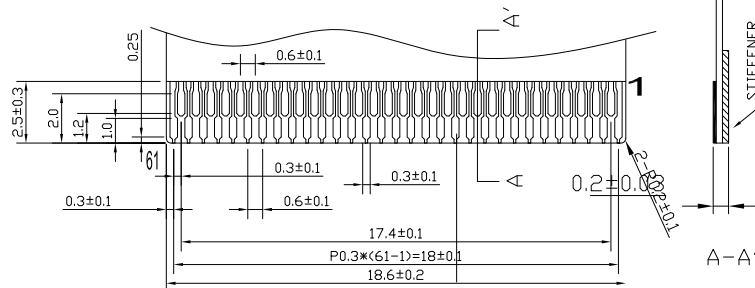
  

RANGE	GENERAL ANGULAR TOLERANCE			SELECT LEVEL
	1	2	3	
∠	∠	∠	∠	2

Specification:

- 1). Viewing angle: 6:0' Clock
- 2). Display mode: 262K TFT/Transmissive
- 3). Operating temp: -20°C~+70°C
- 4). Storage temp: -30°C~+80°C
- 5). LCD Driver IC:ILI9341V
- 6). Backlight: 4 chip White LED
- 7). General Tolerance: ±0.25
- 8). ROHS Request

DETAIL: "A"



LED Source(CIRCUIT DIAGRAM)



Note:3-wire 9-bit data serial interface I

CUSTOMER APPROVAL

注: 弯折出货 FPC的C1位置焊电容, 规格是0402-1uF/10V

Palm Technology Co., Ltd.

MODEL  
PT0282432-B904

DWG NO

VER  
A  
PAGE  
1/1

APPROVAL

CHECK

DRAWING  
Eric

VER	REVISION RECORD	DATE
A	First issue	2016.09.09