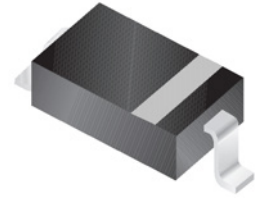


FEATURES

- Total Power Dissipation: Max. 500 mW
- General Purpose, Medium Current
- Lead Free RoHS Compliant
- Lead Free By Design



Package: SOD-123

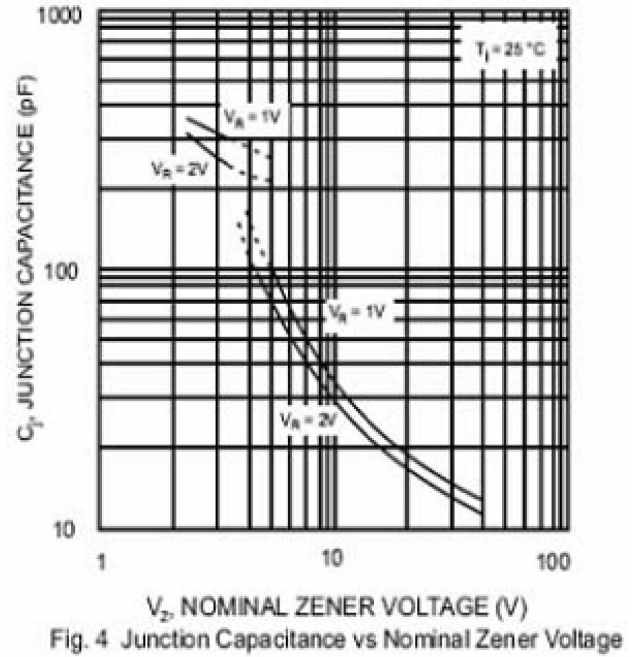
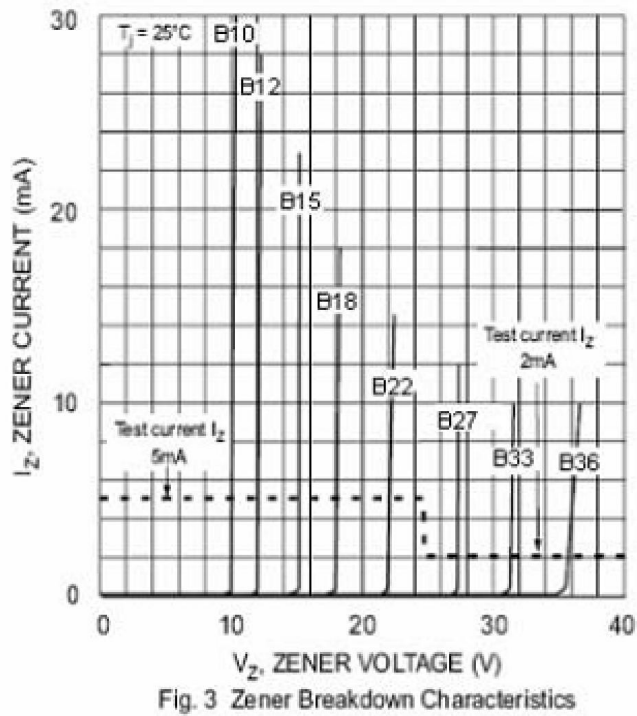
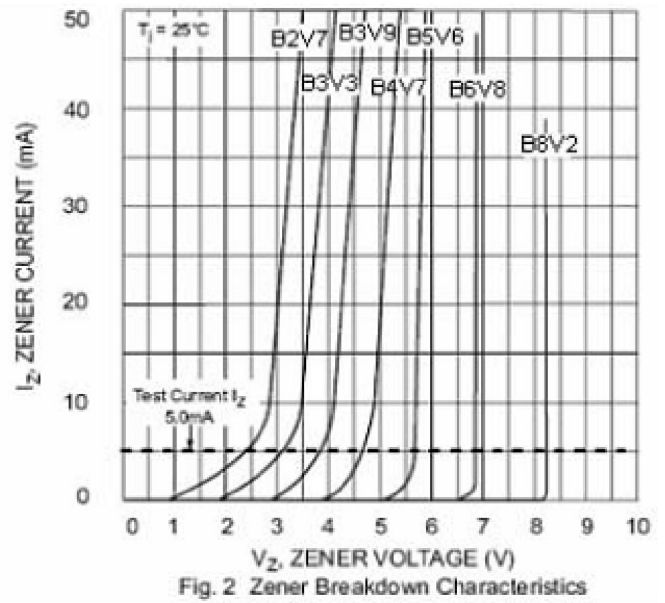
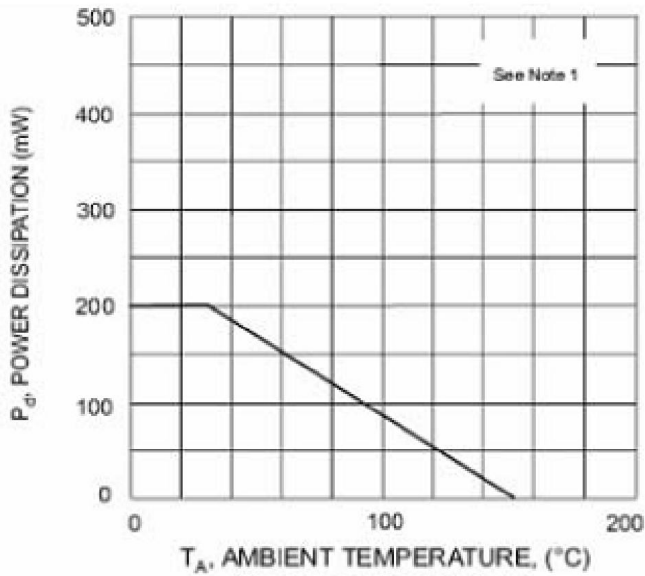
ABSOLUTE MAXIMUM RATINGS ($T_A = 25\text{ }^\circ\text{C}$ unless otherwise noted)

Symbol	Rating	UNIT
V_F	0.9	V
P_d	500	mW
$R_{\theta JA}$	305	$^\circ\text{C}/\text{W}$
T_J, T_{STG}	-65 to 150	$^\circ\text{C}$

ELECTRICAL CHARACTERISTICS ($T_A=25\text{ }^\circ\text{C}$ unless otherwise specified)

Type number	Marking Code	Zener Voltage range				Maximum Zener impedance			Maximum Reverse Current	
		$V_Z @ I_{ZT}$			I_{ZT}	$Z_{ZT} @ I_{ZT}$	$Z_{ZK} @ I_{ZK}$	I_{ZK}	I_R	@ V_R
		Nom (V)	Min (V)	Max (V)	mA	Ω	mA	μA	v	
BZT52B2V4	0Z	2.4	2.35	2.45	5	94	564	1	45	1
BZT52B2V7	1Z	2.7	2.65	2.75	5	94	564	1	18	1
BZT52B3V0	2Z	3.0	2.94	3.06	5	89	564	1	9	1
BZT52B3V3	3Z	3.3	3.23	3.37	5	89	564	1	4.5	1
BZT52B3V6	4Z	3.6	3.53	3.67	5	84	564	1	4.5	1
BZT52B3V9	5Z	3.9	3.82	3.98	5	84	564	1	2.7	1
BZT52B4V3	6Z	4.3	4.21	4.39	5	84	564	1	2.7	1
BZT52B4V7	7Z	4.7	4.61	4.79	5	75	564	1	2.7	2
BZT52B5V1	8Z	5.1	5.00	5.20	5	56	470	1	1.8	2
BZT52B5V6	9Z	5.6	5.49	5.71	5	37	451	1	0.9	2
BZT52B6V2	AZ	6.2	6.08	6.32	5	9	376	1	2.7	4
BZT52B6V8	BZ	6.8	6.66	6.94	5	14	141	1	1.8	4
BZT52B7V5	CZ	7.5	7.35	7.65	5	14	75	1	0.9	5
BZT52B8V2	DZ	8.2	8.04	8.36	5	14	75	1	0.63	5
BZT52B9V1	EZ	9.1	8.92	9.28	5	14	94	1	0.45	6
BZT52B10	FZ	10	9.80	10.20	5	18	141	1	0.18	7
BZT52B11	GZ	11	10.78	11.22	5	18	141	1	0.09	8
BZT52B12	HZ	12	11.76	12.24	5	23	141	1	0.09	8
BZT52B13	JZ	13	12.74	13.26	5	28	160	1	0.09	8
BZT52B15	KZ	15	14.70	15.30	5	28	188	1	0.045	10.5
BZT52B16	LZ	16	15.68	16.32	5	37	188	1	0.045	11.2
BZT52B18	MZ	18	17.64	18.36	5	42	212	1	0.045	12.6
BZT52B20	NZ	20	19.60	20.40	5	51	212	1	0.045	14.0
BZT52B22	PZ	22	21.56	22.44	5	51	235	1	0.045	15.4
BZT52B24	RZ	24	23.52	24.48	5	65	235	1	0.045	16.8
BZT52B27	SZ	27	26.46	27.54	5	75	282	0.5	0.045	18.9
BZT52B30	TZ	30	29.40	30.60	5	75	282	0.5	0.045	21.0
BZT52B33	UZ	33	32.34	33.66	5	75	306	0.5	0.045	23.0
BZT52B36	VZ	36	35.28	36.72	5	84	329	0.5	0.045	25.2
BZT52B39	WZ	39	38.22	39.78	5	122	329	0.5	0.045	27.3
BZT52B43	XZ	43	42.14	43.86	5	141	353	0.5	0.045	30.1
BZT52B47	YZ	47	46.06	47.94	5	160	353	0.5	0.045	33.0
BZT52B51	ZZ	51	49.98	52.02	5	169	376	0.5	0.045	35.7

TYPICAL CHARACTERISTICS ($T_A=25^\circ\text{C}$ unless otherwise specified)



CASE DIMENSION

