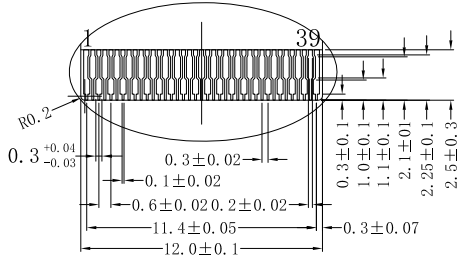
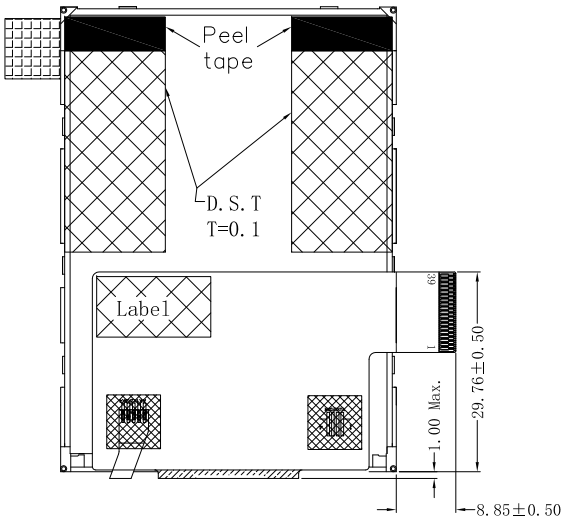
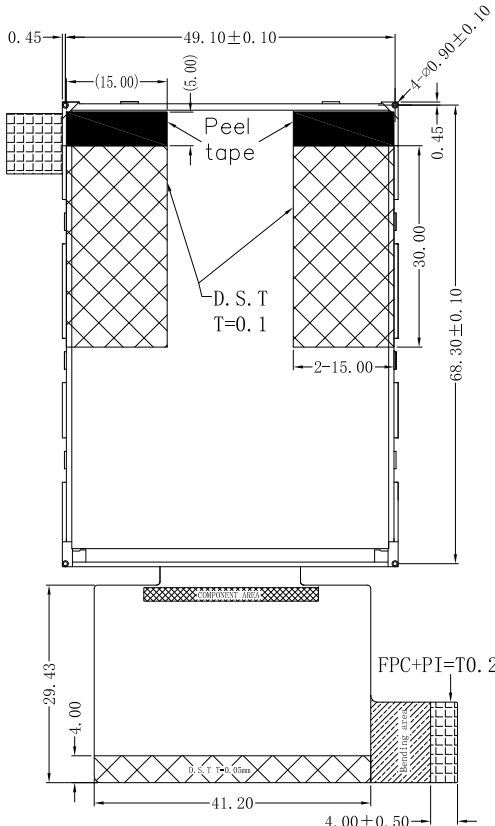
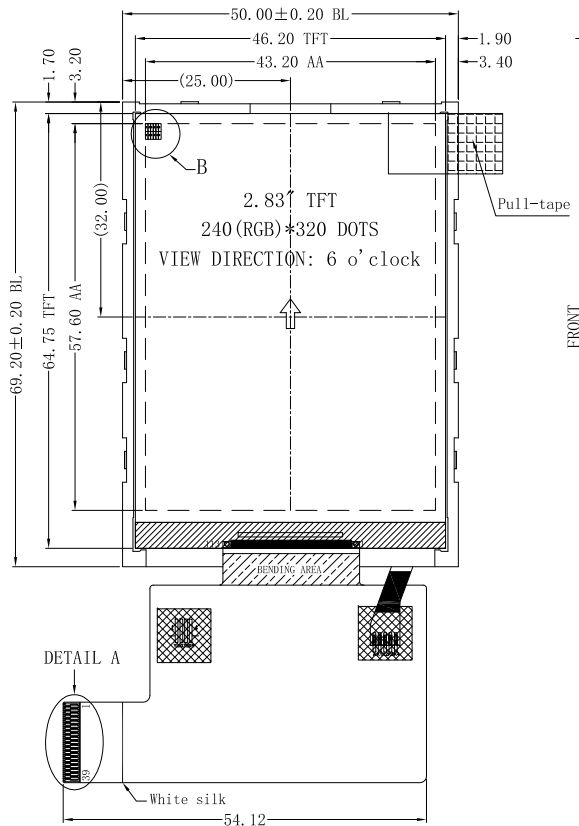


CUSTOMER P/N:

Rev.	DATE	NOTES
V1.0	2016.11.21	New issue
V2.0	2016.12.22	Modify the brightness, FPC & DST design
V2.1	2020.06.29	Modify the DST design at the backside
V3.0	2020.07.03	Add the peeling tab on the tapes



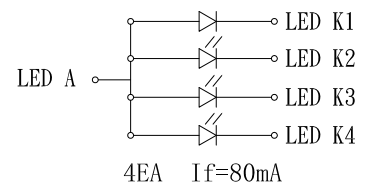
Connector: FH26-39S-0.3SHW (05)

DETAIL A (3:1)

PIN ASSIGNMENT:

No.	PIN NAME
1	VDD
2	VDD1
3	RESET
4	CS
5	RS
6	WR
7	RD
8	GND
9	NC
10	NC
11	DB0
12	DB1
13	DB2
14	DB3
15	DB4
16	DB5
17	DB6
18	DB7
19	DB8
20	DB9
21	DB10
22	DB11
23	DB12
24	DB13
25	DB14
26	DB15
27	DB16
28	DB17
29	LEDA
30	LEDK1
31	LEDK2
32	LEDK3
33	LEDK4
34	GND
35	XR
36	XL
37	YU
38	YD
39	NC

LED CIRCUIT DIAGRAM:



- NOTES:
- 1.DISPLAY TYPE: 2.83" TFT
 - 2.DISPLAY MODE: TM with Normally White
 - 3.VIEW DIRECTION: 6 o'clock
 - 4.OPERATION TEMPERATURE: -20°C~+70°C
STORAGE TEMPERATURE: -30°C~+80°C
 - 5.GENERAL TOLERANCE: ±0.2
 - 6.DRIVER IC: ILI9341V
 - 7.LCM LUMINANCE: 350 cd/m² (Typical)
 - 8.REQUIREMENT ON ENVIRONMENT PROTECTION: ROHS

Customer Approval	Drawn:	DLC Display Co., Ltd			
	Checked:				
	Approved:	Title	TFT LCM OUTLINE	Unit	mm
	Critical Dim.	Part No.	DLC0283QZC	Scale	1:1
	Reference Dim.	Revison	V3.0	Page	1/1
	()	Date	2020-07-03	3 rd Angle	