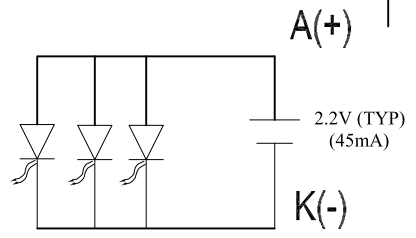


PIN FUNCTION

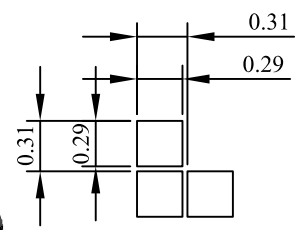
PIN	NAME	PIN	NAME
1	VDD	16	D7
2	C86	17	D6
3	VSS	18	D5
4	V0	19	D4
5	V1	20	D3
6	V2	21	D2
7	V3	22	D1
8	V4	23	D0
9	C2N	24	/RD(E)
10	C2P	25	/WR(R/W)
11	C1P	26	A0
12	C1N	27	RST
13	C3P	28	/CS1
14	VOUT	29	NC
15	VSS	30	NC

↑ 6:00 O'CLOCK VIEWING DIRECTION

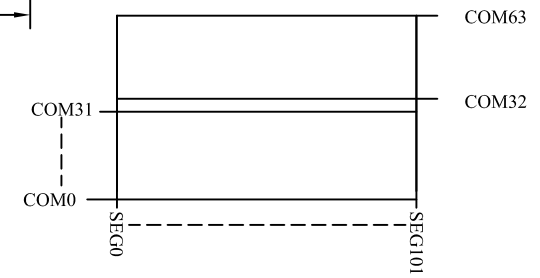
- NOTES:
1. DISPLAY TYPE: FSTN, TRANSFLECTIVE/POSITIVE
 2. VIEW DIRECTION: 6:00 O' CLOCK
 3. DRIVER METHOD: 1/64 DUTY, 1/9 BIAS
 4. LCD DRIVING VOLTAGE: 9.6V
 5. LOGIC SUPPLY VOLTAGE: 2.4~3.3V
 6. OPERATING TEMP: -20° C~+70° C
 7. STORAGE TEMP: -40° C~+80° C
 8. CONTROLLER/DRIVE IC: ST7565R
 9. CONNECTOR TYPE: COG+FPC
 10. BACKLIGHT: LED/YELLOW GREEN 2.2V/45mA
 11. TOLERANCE UNLESS OTHER SPECIFIED: ±0.2mm



CIRCUIT FOR LED BACKLIGHT



DOT DETAIL SCALE: 15X



LCD LAYOUT

XIAMEN OCULAR OPTICS CO.,LTD						
REVISION RECORD					Drawn:	Model Name:
Ver.	Date	Modify	Contents	Name	SKY	GDC10264A1-FSY-FBW
2					Checker:	Date:
3						MAY 10,2013
4					Approved:	
5						
6					Page: 1-1	

