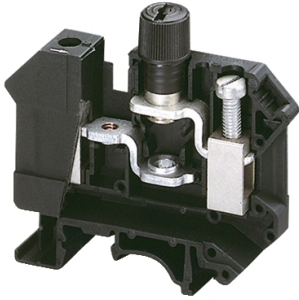


Product data sheet

Specifications



Terminal block, Linergy TR, screw type, fused, screw cap, for 5x20mm cartridge fuse, 2 points

NSYTRV162SF

Main

Range	Linergy
Product Name	TR
Product Or Component Type	Terminal block
Device Short Name	TRV
Terminal Block Type	Fixed carrier
Device Application	Protection
Associated Connection Component	Cylindrical fuse
Terminal Block Level	1
Mounting Mode	Clip-on
Nominal Cross Section	16 mm ²
Length	62 mm
Colour	Black
Quantity Per Set	Set of 50

Complementary

Fuse Size	5 x 20 mm
Width	12 mm
Height	57.2 mm
Connections - Terminals	1 x screw terminal: upstream 1 x screw terminal: downstream
Number Of Connections	2
Connection Position	Sideways
Number Of Measurement Input	0
Cable Cross Section	1.5...16 mm ² , flexible with cable end 0.08...2.5 mm ² , flexible without cable end 0.5...16 mm ² , solid without cable end
Tightening Torque	1.5...1.8 N.m
Wire Stripping Length	11 mm
Tool Type	Connection: screwdriver Disconnection: screwdriver
[Ue] Rated Operational Voltage	500 V conforming to EN/IEC 60947-7-1 300 V cURus 300 V CSA

[In] Rated Current	10 A conforming to EN/IEC 60947-7-1 20 A cURus 20 A CSA
Material	Polyamide 6/6: insulating case
Dielectric Loss	0.01 at 1 MHz conforming to IEC 60250 0.01 at 1 MHz conforming to VDE 0303-T4
Dielectric Constant	3.7 at 1 MHz
Resistivity	10000 Ω.cm conforming to IEC 60093 10000 Ω.cm conforming to VDE 0303-T30
Surface Resistance	1000 MOhm conforming to IEC 60093 1000 MOhm conforming to VDE 0303-T30
Creep Resistance	500 CTI (> 400 kB) conforming to IEC 60093 500 CTI (> 400 kB) conforming to VDE 0303-T30
Flame Retardance	V0, thickness 0.8 mm conforming to UL 94
Net Weight	33.8 g
Range Compatibility	Prisma G Prisma P Prisma PH Prisma Pack Spacial Kaedra Pragma TeSys
Product Compatibility	Spacial enclosures

Environment

Product Certifications	EAC DNV cURus CSA LR
Dielectric Strength	1000 V conforming to IEC 60243-1
Ambient Air Temperature For Operation	-40...130 °C conforming to IEC 60216-1 -40...130 °C conforming to VDE 0304-T21

Packing Units

Unit Type Of Package 1	PCE
Number Of Units In Package 1	1
Package 1 Height	1.200 cm
Package 1 Width	5.700 cm
Package 1 Length	6.500 cm
Package 1 Weight	33.000 g
Unit Type Of Package 2	BB1
Number Of Units In Package 2	50
Package 2 Height	6.500 cm
Package 2 Width	13.500 cm
Package 2 Length	31.000 cm
Package 2 Weight	1.690 kg
Unit Type Of Package 3	P06
Number Of Units In Package 3	3400

Package 3 Height	75.000 cm
Package 3 Width	60.000 cm
Package 3 Length	80.000 cm
Package 3 Weight	128.920 kg

Contractual warranty

Warranty	18 months
-----------------	-----------

Sustainability

Green Premium™ label is Schneider Electric's commitment to delivering products with best-in-class environmental performance. Green Premium promises compliance with the latest regulations, transparency on environmental impacts, as well as circular and low-CO₂ products.

Guide to assessing product sustainability is a white paper that clarifies global eco-label standards and how to interpret environmental declarations.

[Learn more about Green Premium >](#)

[Guide to assess a product's sustainability >](#)



Transparency RoHS/REACH

Well-being performance

Mercury Free

Rohs Exemption Information Yes

Halogen Free Plastic Parts Product

Certifications & Standards

Reach Regulation	REACH Declaration
Eu Rohs Directive	Compliant with Exemptions
China Rohs Regulation	China RoHS declaration Product out of China RoHS scope. Substance declaration for your information
Environmental Disclosure	Product Environmental Profile
Weee	The product must be disposed on European Union markets following specific waste collection and never end up in rubbish bins
Circularity Profile	No need of specific recycling operations