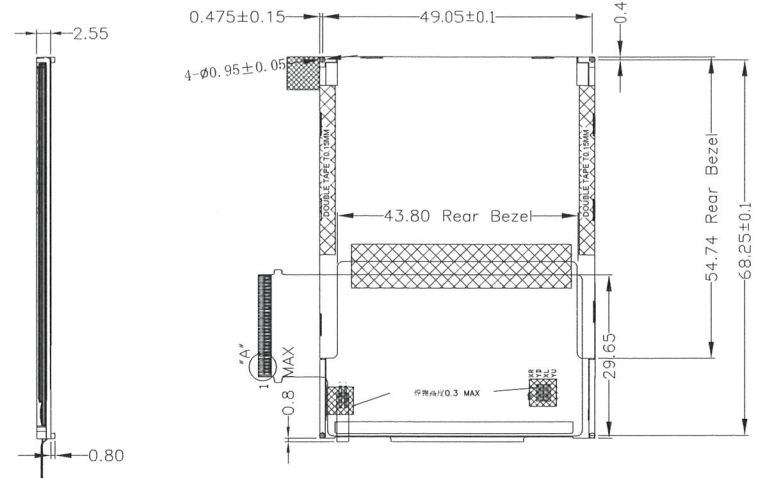
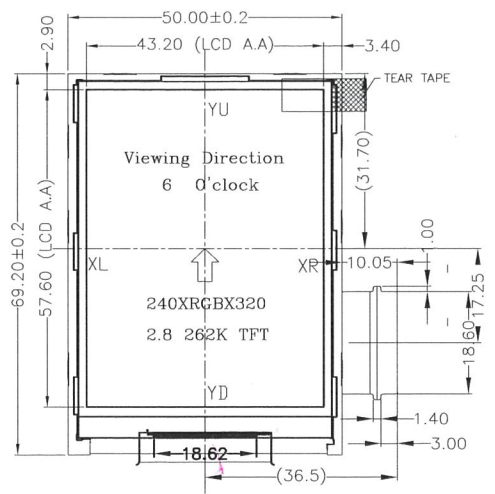


A		B		C		D		E		F		G			
UNIT: mm										VER		REVISION RECORD		DATE	
										A		First issue		2016.09.09	

1



INTERNAL CONNECTING PIN

PIN	SYMBOL	PIN	SYMBOL	PIN	SYMBOL
1	GND	21	D10	41	YU
2	VCI/2.8V	22	D9	42	XL
3	VCC/1.8V	23	D8	43	YD
4	NC	24	D7	44	XR
5	SDA	25	D6	45	NC
6	NC	26	D5	61	NC
7	NC	27	D4		
8	NC	28	D3		
9	NC	29	D2		
10	VSYNC	30	D1		
11	HSYNC	31	D0		
12	DOTCLK	32	NC		
13	DE	33	SCL		
14	D17	34	NC		
15	D16	35	CS		
16	D15	36	FLM		
17	D14	37	RESET		
18	D13	38	GND		
19	D12	39	LED A		
20	D11	40	LED K		

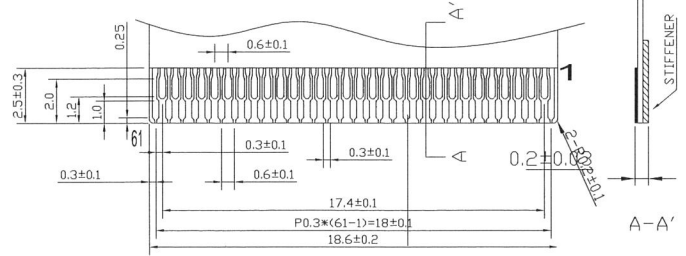
DIMENSION	GENERAL LINEAR TOLERANCE			SELECT LEVEL
	1	2	3	
0 ~ 4	0.05	0.15	0.2	2
4 ~ 14	0.1	0.15	0.2	
14 ~ 63	0.1	0.2	0.3	1
63 ~ 250	0.2	0.4	0.6	
GENERAL ANGULAR TOLERANCE		SELECT LEVEL		
LEVEL	1	2	3	
RANGE	1'	2'	3'	2

4

Specification:

- 1). Viewing angle: 6:0' Clock
- 2). Display mode: 262K TFT/Transmissive
- 3). Operating temp: -20°C~+70°C
- 4). Storage temp: -30°C~+80°C
- 5). LCD Driver IC: ILI9341V
- 6). Backlight: 4 chip White LED
- 7). General Tolerance: ±0.25
- 8). ROHS Request

DETAIL: "A"



LED Source(CIRCUIT DIAGRAM)



Note: 3-wire 9-bit data serial interface I

5

注: 弯折出货 FPC的C1位置焊电容, 规格是0402-1uF/10V

CUSTOMER APPROVAL

 Ting-kai Chen

Palm Technology Co., Ltd.	MODEL	DWG NO	VER	PAGE	APPROVAL	CHECK	DRAWING
	PT0282432-B904		A	1/1			Eric