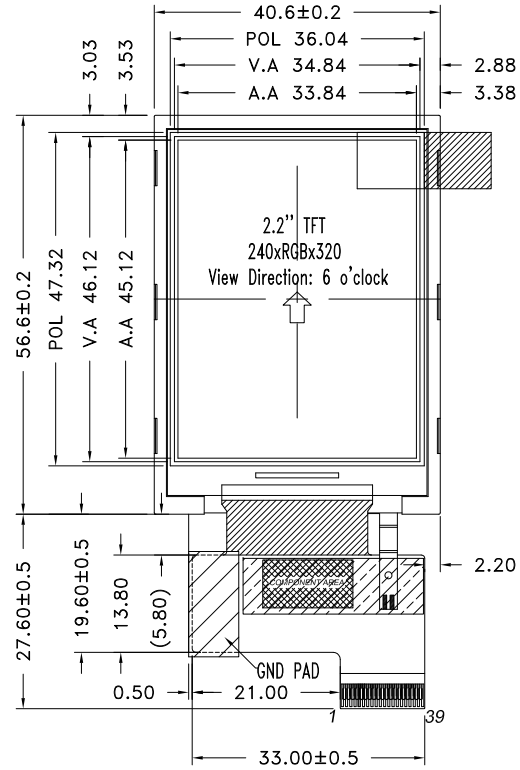


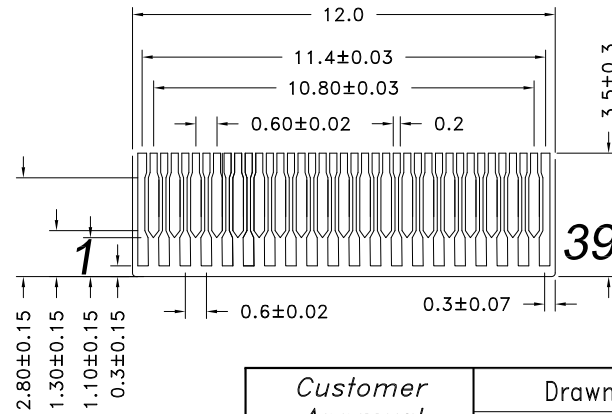
CUSTOMER P/N:

5		6	
Rev.	DATA	NOTES	
V3.1	2018.06.11	Change the 12:00 Viewing Direction to 6 o'clock	



No:	PIN NAME
1	LED+
2	LED-
3	GND
4	VDD
5	GND
6	VSYNC
7	RESET
8	GND
9	CS
10	SDO
11	SDI
12	GND
13	SCL
14	GND
15	B5
16	B4
17	B3
18	B2
19	B1
20	B0
21	ENABLE
22	HSYNC
23	GND
24	DCLK
25	GND
26	G5
27	G4
28	G3
29	G2
30	G1
31	G0
32	GND
33	R5
34	R4
35	R3
36	R2
37	R1
38	R0
39	GND

FH23-39S-0.3SHAW
SCALE 5 : 1



- NOTES:
- 1.DISPLAY TYPE: 2.2" a-Si TFT
 - 2.DISPLAY MODE: TRANSFLECTIVE
 - 3.VIEW DIRECTION: 6 o'clock
 - 4.OPERATION TEMPERATURE: -20°C~+70°C
STORAGE TEMPERATURE: -30°C~+80°C
 - 5.GENERAL TOLERANCE: ±0.2
 - 6.DRIVER IC: ILI9341
 - 7.REQUIREMENT ON ENVIRONMENT PROTECTION: ROHS

Customer Approval	Drawn:	DLC Display Co., Ltd			
	Checked:				
	Approved:	Title	TFT LCM OUTLINE	Unit	mm
	Critical Dim.	Part No.	DLC0220BMG	Scale	1:1
	Reference Dim.	Revison	V3.1	Page	1/1
	()	Date	2018-06-11	3 rd Angle	