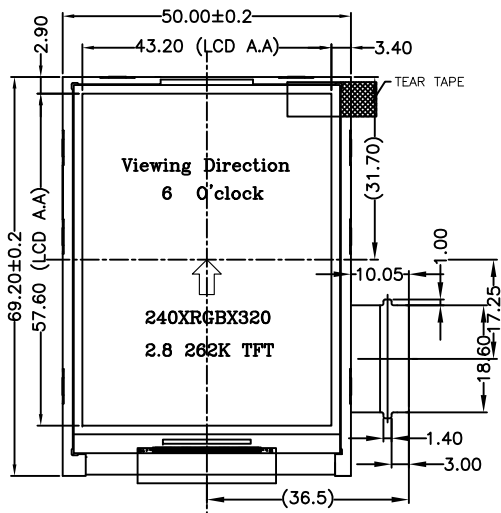


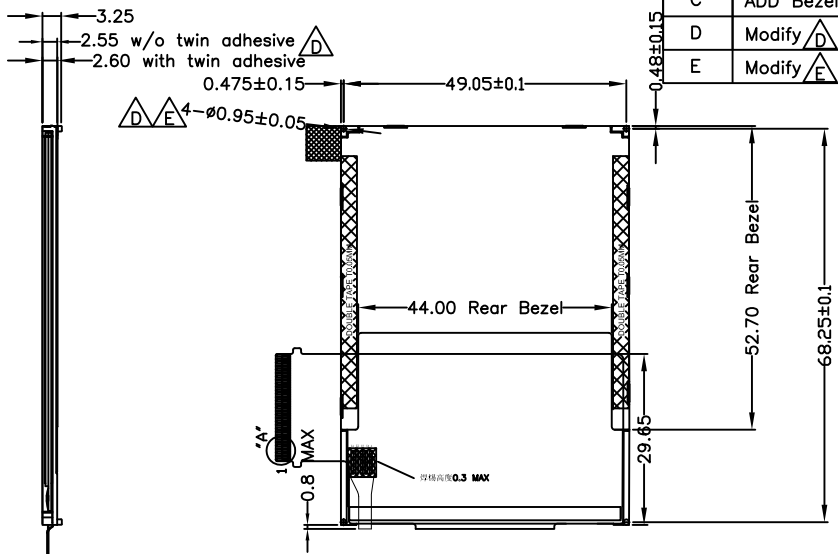
UNIT: mm

VER	REVISION RECORD	DATE
A~B	First issue	2012.09.07
C	ADD Bezel & Double Tape Size	2012.11.14
D	Modify Δ	2013.03.12
E	Modify Δ	2013.03.20

1



2



3

INTERNAL CONNECTING PIN

PIN	SYMBOL	PIN	SYMBOL	PIN	SYMBOL
1	GND	21	D10	41	NC
2	VCI	22	D9	42	NC
3	VCC	23	D8	43	NC
4	NC	24	D7	44	NC
5	SDA	25	D6	45	NC
6	IM0	26	D5	61	NC
7	IM1	27	D4		
8	IM2	28	D3		
9	IM3	29	D2		
10	VSYNC	30	D1		
11	HSYNC	31	D0		
12	DOTCLK	32	NRD		
13	DE	33	NWR_SCL		
14	D17	34	RS		
15	D16	35	NCS		
16	D15	36	FLM		
17	D14	37	NRESET		
18	D13	38	GND		
19	D12	39	LED A		
20	D11	40	LED K		

4

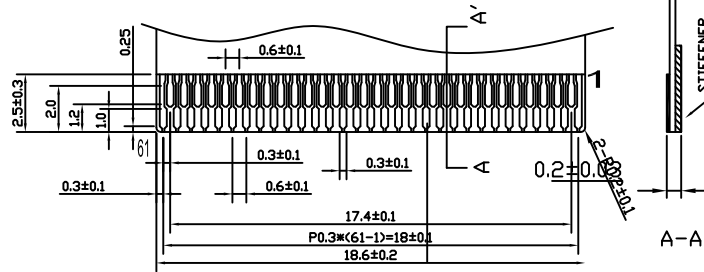
注：弯折出货

Specification:

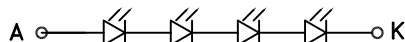
- 1). Viewing angle: 6:0' Clock
- 2). Display mode: 262K TFT/Transmissive
- 3). Operating temp: -20°C~+70°C
- 4). Storage temp: -30°C~+80°C
- 5). LCD Driver IC:HX8347-G
- 6). Backlight: 4 chip White LED
- 7). General Tolerance: ±0.25
- 8). ROHS Request

5

DETAIL: 'A'



LED Source(CIRCUIT DIAGRAM)



IM3	IM2	IM1	IM0	MPU-Interface	Pin in use
0	0	1	0	8080 16bit	DB[17:10],DB[8:1]
0	0	1	1	8080 8bit	DB[17:10]
1	0	1	0	8080 18bit	DB[17:0]
1	0	1	1	8080 9bit	DB[17:9]
0	1	0	ID	3 bit SPI	

CUSTOMER APPROVAL