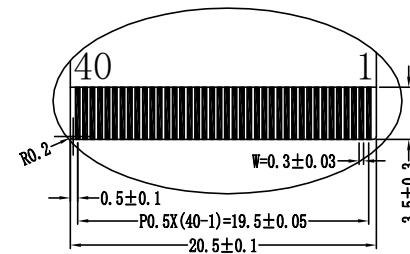
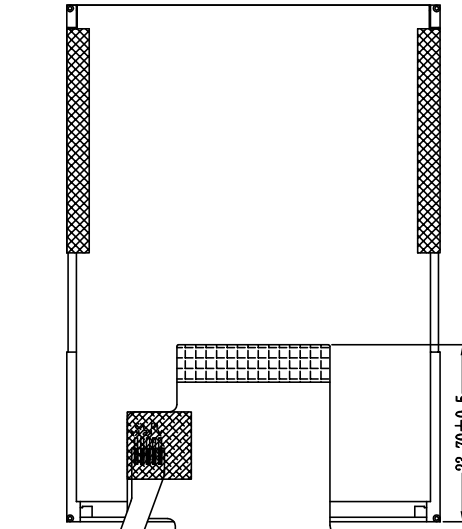
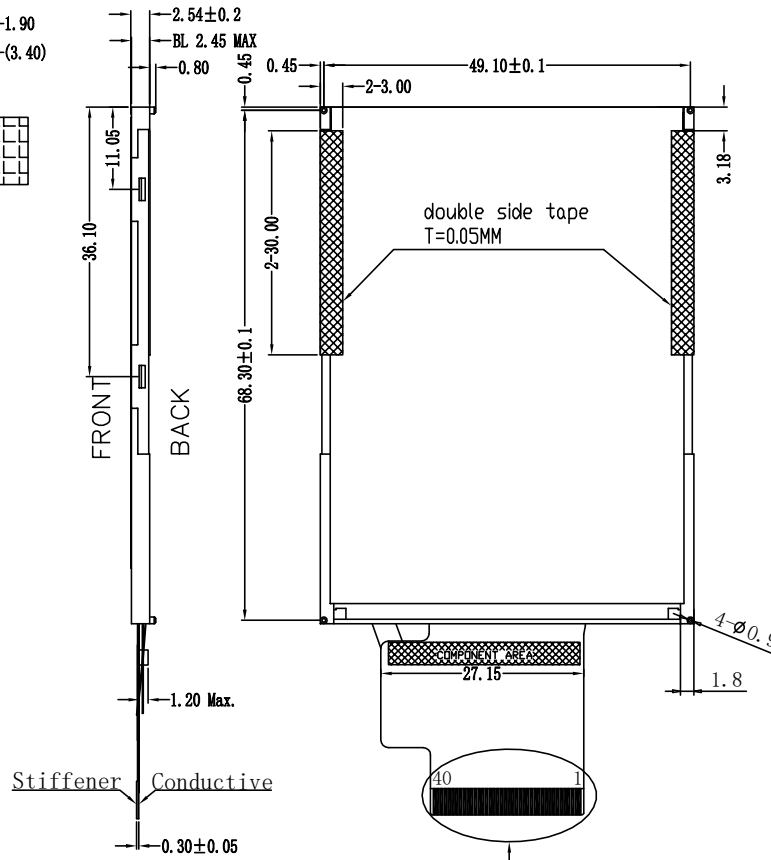
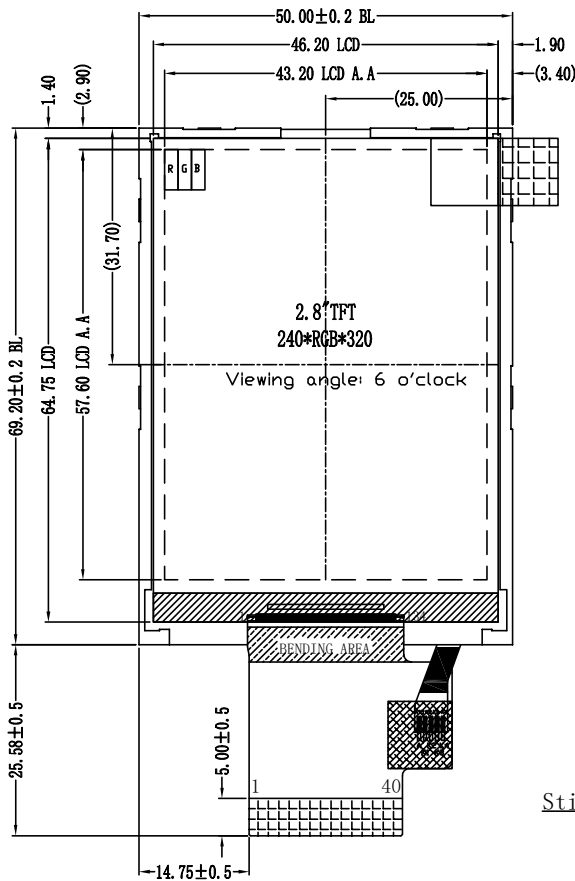


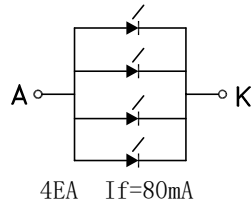
PIN ASSIGNMENT:

1	NC
2	IOVCC
3	DB17
4	DB16
5	DB15
6	DB14
7	DB13
8	DB12
9	DB11
10	DB10
11	DB9
12	DB8
13	DB7
14	DB6
15	DB5
16	DB4
17	DB3
18	DB2
19	DB1
20	DB0
21	SDI/SDA
22	DOTCLK
23	DE
24	HSYNC
25	VSYNC
26	RD
27	WR D/C
28	D/C SCL
29	CS
30	RESET
31	IM0
32	IM1
33	IM2
34	IM3
35	NC
36	GND
37	VCC
38	NC
39	LED-A
40	LED-K



DETAIL A(2:1)

LED CIRCUIT DIAGRAM:



NOTES:

1. DISPLAY TYPE: 2.83" TFT, TRANSMISSIVE
2. VIEWING DIRECTION : U/L/D/R 55/65/65/65
3. Driver IC : ILI9341V
4. Top : -20° C ~ 70° C, Tst : -30° C ~ 80° C
5. GENERAL TOLERANCE: ±0.2
6. LCM Luminance: LED/280cd/m² (Typical)

DLC Display Co., Limited

www.dlcdisplay.com

DRAWN BY:	TITLE: DLC0283PZG-8	
CHECKED BY:	DWG NO:	
APPROVED BY:	DWG NAME:	UNIT: mm
CONFIRMED BY:	SHEET NO:	OF