

215083-8 ✓ ACTIVE

Micro-MaTch | Micro-MaTch Industrial

TE Internal #: 215083-8

Cable-to-Board, 8 Position, 1.27 mm [.05 in] Centerline, Vertical, 2 Row, Plug, Standard Profile, Micro-MaTch Industrial, Ribbon Cable Connectors

[View on TE.com >](#)



[Connectors](#) > [PCB Connectors](#) > [Wire-to-Board Connectors](#) > [FFC, FPC & Ribbon Connectors](#) > [Ribbon Cable Connectors](#) >

[Male-on-Wire Connector, Micro-MaTch](#)



Connector System: **Cable-to-Board**

Number of Positions: **8**

Centerline (Pitch): **1.27 mm [.05 in]**

PCB Mount Retention: **Without**

PCB Mount Orientation: **Vertical**

[All Male-on-Wire Connector, Micro-MaTch \(19\)](#)

## Features

### Product Type Features

|                                    |                    |
|------------------------------------|--------------------|
| Connector System                   | Cable-to-Board     |
| Connector & Housing Type           | Plug               |
| Connector & Contact Terminates To  | Wire & Cable       |
| Connector Product Type             | Connector Assembly |
| Ribbon Cable Connector Type        | Male-On-Wire       |
| Ribbon Cable Connector Header Type | Shrouded           |

### Configuration Features

|                       |          |
|-----------------------|----------|
| Number of Positions   | 8        |
| PCB Mount Orientation | Vertical |
| Number of Rows        | 2        |

### Housing Features

|                    |                  |
|--------------------|------------------|
| Centerline (Pitch) | 1.27 mm [.05 in] |
| Housing Material   | PBT GF           |

### Mechanical Attachment

|                       |              |
|-----------------------|--------------|
| PCB Mount Retention   | Without      |
| Mating Alignment Type | Polarization |



|                                       |                            |
|---------------------------------------|----------------------------|
| Mating Retention                      | With                       |
| Mating Retention Type                 | Contact Friction           |
| Connector Mounting Type               | Cable Mount (Free-Hanging) |
| Contact Retention Type Within Housing | Press-Fit                  |
| Mating Alignment                      | With                       |
| PCB Mount Alignment                   | Without                    |

### Dimensions

|                                      |                           |
|--------------------------------------|---------------------------|
| Row-to-Row Spacing                   | 2 mm[.059 in]             |
| Compatible Insulation Diameter Range | .8 – 1 mm[.035 – .039 in] |
| Connector Height                     | 6.8 mm[.27 in]            |
| Wire Size                            | 28 AWG                    |
| Connector Length                     | 13.6 mm[.535 in]          |

### Body Features

|                       |          |
|-----------------------|----------|
| Connector Profile     | Standard |
| Daisy Chain           | With     |
| Primary Product Color | Red      |

### Contact Features

|   |   |
|---|---|
| Contact Current Rating (Max)                          | 1.5 A   |
| Contact Underplating Material                         | Nickel  |
| PCB Contact Termination Area Plating Material Finish  | Matte   |
| Contact Mating Area Plating Material Thickness        | 3 – 5 $\mu\text{m}$ [118.11 – 196.85 $\mu\text{in}$ ] |
| Wire Contact Termination Area Plating Material        | Tin   |
| Wire Contact Termination Area Plating Material Finish | Matte   |
| Mating Tab Width                                      | .7 mm[.028 in]  |
| Contact Mating Area Plating Material                  | Tin   |
| Contact Base Material                                 | Phosphor Bronze                                       |
| Mating Tab Thickness                                  | .4 mm[.016 in]  |
| PCB Contact Termination Area Plating Material         | Tin   |
| Wire Contact Termination Area Plating Thickness       | 3 – 5 $\mu\text{m}$ [118.11 – 196.85 $\mu\text{in}$ ] |
| Contact Type  | Pin   |

### Operation/Application

|                     |        |
|---------------------|--------|
| Circuit Application | Signal |
|---------------------|--------|



### Usage Conditions

|                             |                            |
|-----------------------------|----------------------------|
| Operating Temperature Range | -40 – 105 °C[-40 – 221 °F] |
|-----------------------------|----------------------------|

### Other

|                    |           |
|--------------------|-----------|
| EU RoHS Compliance | Compliant |
| EU ELV Compliance  | Compliant |

### Electrical Characteristics

|                       |         |
|-----------------------|---------|
| Operating Voltage     | 100 VDC |
| Insulation Resistance | 1000 MΩ |

### Termination Features

|                                    |                               |
|------------------------------------|-------------------------------|
| Termination Method to Wire & Cable | Insulation Displacement (IDC) |
|------------------------------------|-------------------------------|

### Industry Standards

|   |            |
|---|------------|
| Compatible With Agency/Standards Products   | UL         |
| UL Rating                                   | Recognized |
| UL Flammability Rating                      | UL 94V-0   |
| Compatible With Approved Standards Products | UL E28476  |

### Packaging Features

|                    |      |
|--------------------|------|
| Packaging Quantity | 2500 |
| Packaging Method   | Reel |

### Product Compliance

[For compliance documentation, visit the product page on TE.com>](#)

|   |   |
|---|---|
| EU RoHS Directive 2011/65/EU                  | Compliant   |
| EU ELV Directive 2000/53/EC                   | Compliant   |
| China RoHS 2 Directive MIIT Order No 32, 2016 | No Restricted Materials Above Threshold   |
| EU REACH Regulation (EC) No. 1907/2006        | Current ECHA Candidate List: JUNE 2024 (241)<br>Candidate List Declared Against: JUNE 2024 (241)<br>Does not contain REACH SVHC |
| Halogen Content                               | Not Low Halogen - contains Br or Cl > 900 ppm.  |
| Solder Process Capability                     | Not applicable for solder process capability  |

Product Compliance Disclaimer

This information is provided based on reasonable inquiry of our suppliers and represents our current actual knowledge based on the information they provided. This information is subject to change. The part numbers that TE has identified as EU RoHS compliant have a maximum concentration of 0.1% by weight in homogenous materials for lead, hexavalent chromium, mercury, PBB, PBDE, DBP, BBP, DEHP, DIBP, and 0.01% for cadmium, or qualify for an exemption to these limits as defined in the Annexes of Directive 2011/65/EU (RoHS2). Finished electrical and electronic equipment products will be CE marked as required by Directive 2011/65/EU. Components may not be CE marked. Additionally, the part numbers that TE has identified as EU ELV compliant have a maximum concentration of 0.1% by weight in homogenous materials for lead, hexavalent chromium, and mercury, and 0.01% for cadmium, or qualify for an exemption to these limits as defined in the Annexes of Directive 2000/53/EC (ELV). Regarding the REACH Regulation, the information TE provides on SVHC in articles for this part number is based on the latest European Chemicals Agency (ECHA) 'Guidance on requirements for substances in articles' posted at this URL: <https://echa.europa.eu/guidance-documents/guidance-on-reach>

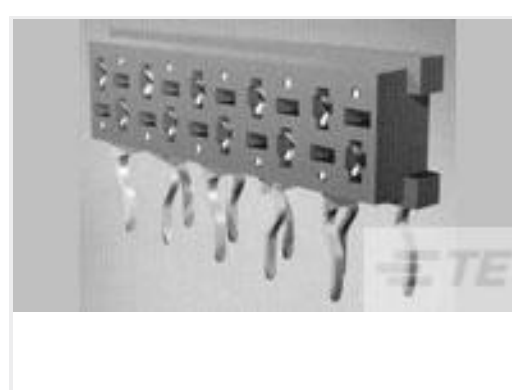
## Compatible Parts



TE Part # CAT-M5833-F3492A  
Female-on-Board Connector, Top  
Entry



TE Part # 7-215460-8  
MICRO-MATCH FSID P



TE Part # 100400-8  
MICRO-MATCH FSID NP



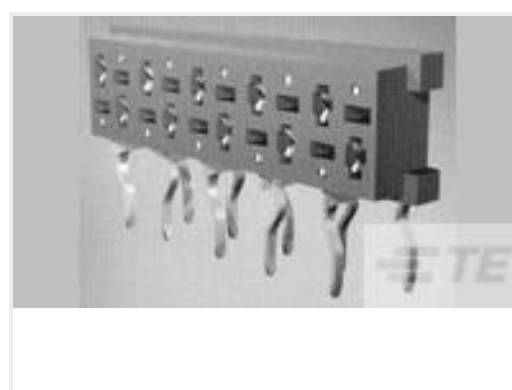
TE Part # 7-188431-8  
MM 8p FIB SMD connector



TE Part # 215460-8  
MICRO-MATCH FEM.SE



TE Part # 338070-8  
MICRO-MATCH FEM.SE



TE Part # 7-100400-8  
MICRO-MATCH FSID NP



TE Part # 734024-1  
Micro-MaTch ADAPTER, 4-24 POS.



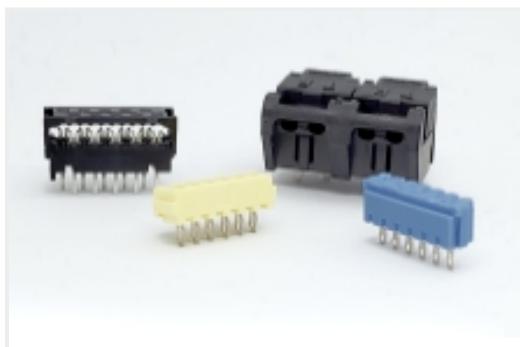
TE Part # 519708-1  
TERMINATION PUSHER



TE Part # 677412-4  
SEMI AUTO.MACHINE, MICRO-  
MATCH, 4-24 POS

Also in the Series | [Micro-MaTch Industrial](#)

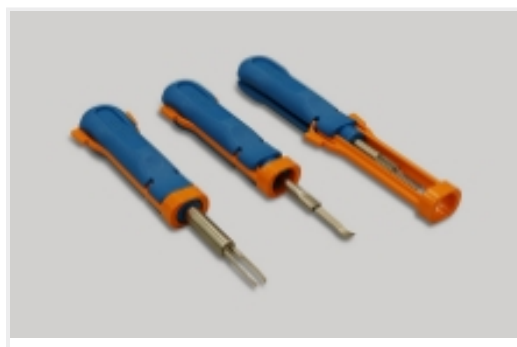




Board-In Connectors(20)



Connector Contacts(4)



Insertion & Extraction Tools(1)



Pluggable I/O Cable Assemblies(52)



Ribbon Cable Connectors(183)

## Customers Also Bought



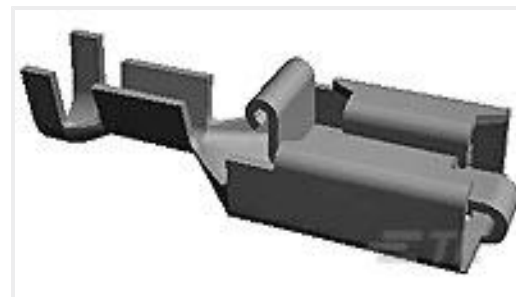
TE Part #188275-8  
MICRO-MATCH SMD FTE



TE Part #292174-3  
CT BOX HDR V SMT 3P O/TAPE NAT



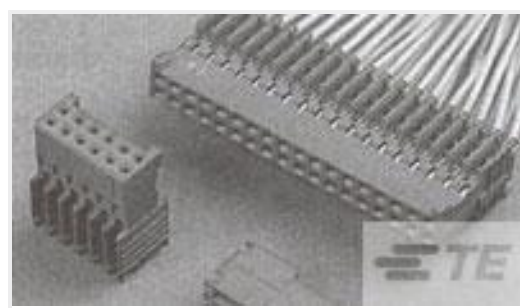
TE Part #292175-5  
CT BOX HDR V SMT 5P O/TAPE NAT



TE Part #281827-2  
PL 0.5-1.5 MM2 0.40 X 52.30 TPBR



TE Part #215083-6  
Male-on-Wire Connector, Micro-MaTch



TE Part #281792-8  
PLUG HE14 IDC 180 2X8 P AWG 28-26

## Documents

### Product Drawings

[MICRO-MATCH MOW.08P](#)

English

### CAD Files

[3D PDF](#)

[3D](#)

[Customer View Model](#)

[ENG\\_CVM\\_CVM\\_215083-8\\_U.2d\\_dxf.zip](#)



English

**Customer View Model**

[ENG\\_CVM\\_CVM\\_215083-8\\_U.3d\\_igs.zip](#)

English

**Customer View Model**

[ENG\\_CVM\\_CVM\\_215083-8\\_U.3d\\_stp.zip](#)

English

By downloading the CAD file I accept and agree to the [Terms and Conditions](#) of use.

---

## Datasheets & Catalog Pages

[Micro-MaTch Catalog](#)

English

[Ribbon Cable Interconnect Solutions](#)

English

[Centerline Micro-Match Connector Series](#)

English

---

## Product Specifications

[Application Specification](#)

English

[micro match miniature connector system](#)

English

---

## Agency Approvals

[UL Report](#)

English